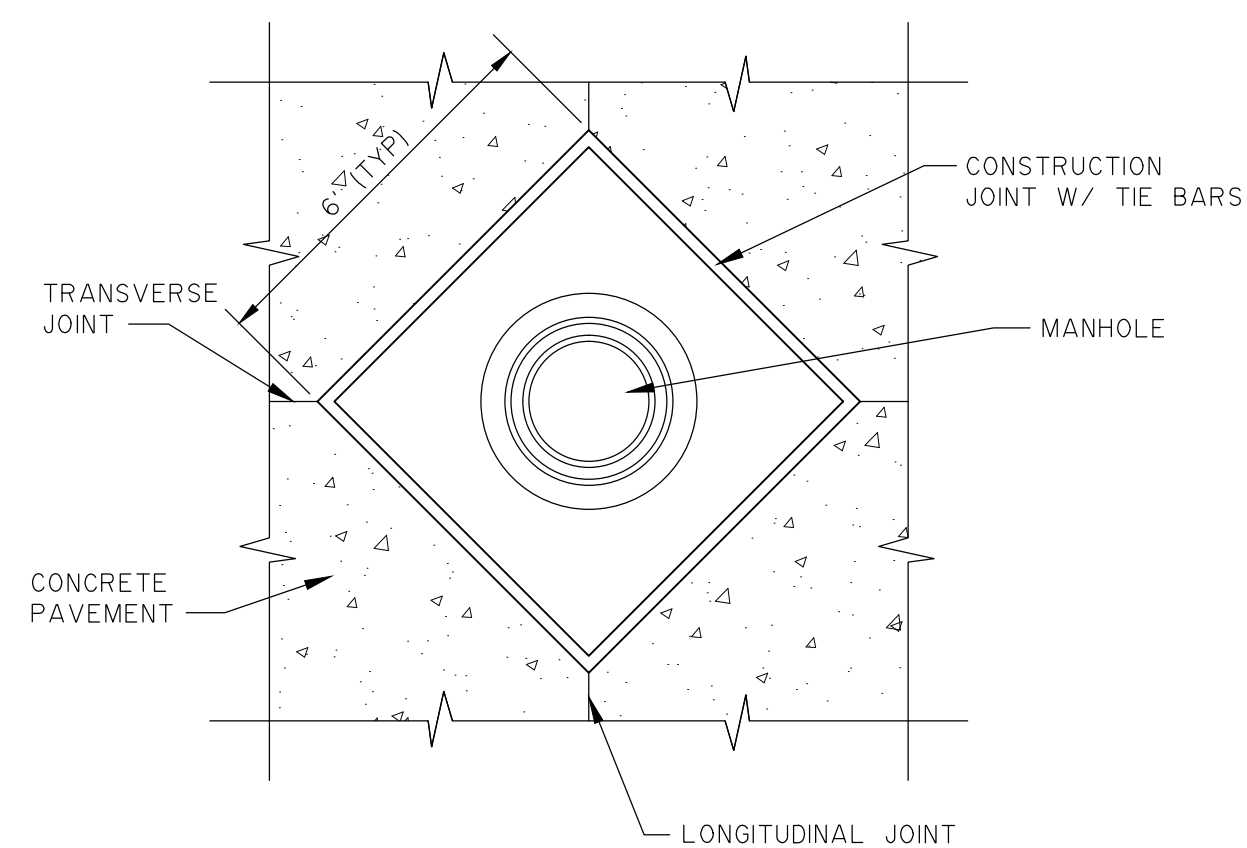


SECTION A-A

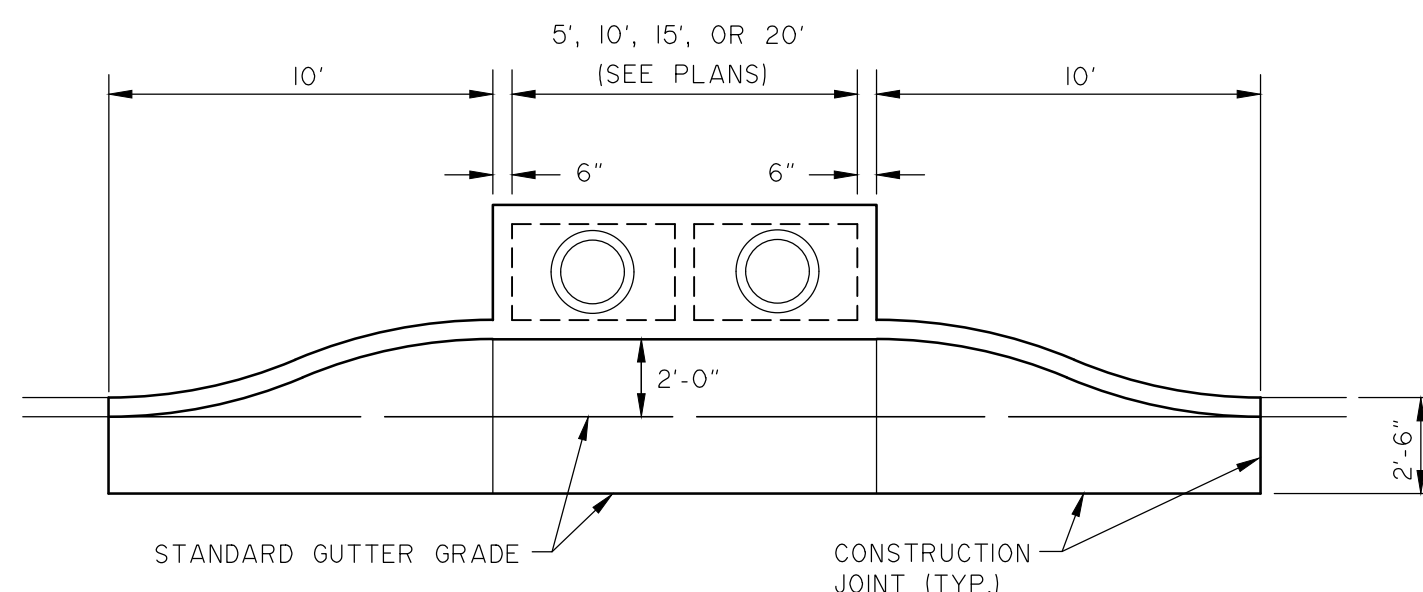
NOTES:

1. CONNECTION TO TXDOT FACILITIES WILL REQUIRE COORDINATION WITH TXDOT AND PERMIT FROM TXDOT.
2. THE SLOPE OF THE DRIVE WHERE SIDEWALKS CROSS SHALL BE A MAXIMUM 2% AND CURB SHALL BE CONSTRUCTED PER THE ACCESS RAMP DETAILS.
3. REMOVE ANY EXISTING SIDEWALK AT NEAREST JOINT.
4. RESIDENTIAL DRIVES TO BE 10' RADIUS AND 12' WIDE MINIMUM.
5. COMMERCIAL DRIVES TO BE 20' RADIUS AND 24' WIDE MINIMUM.
6. SIDEWALKS ADJACENT TO DRIVEWAYS SHALL BE IN ACCORDANCE WITH ADA RULES AND REGULATIONS.

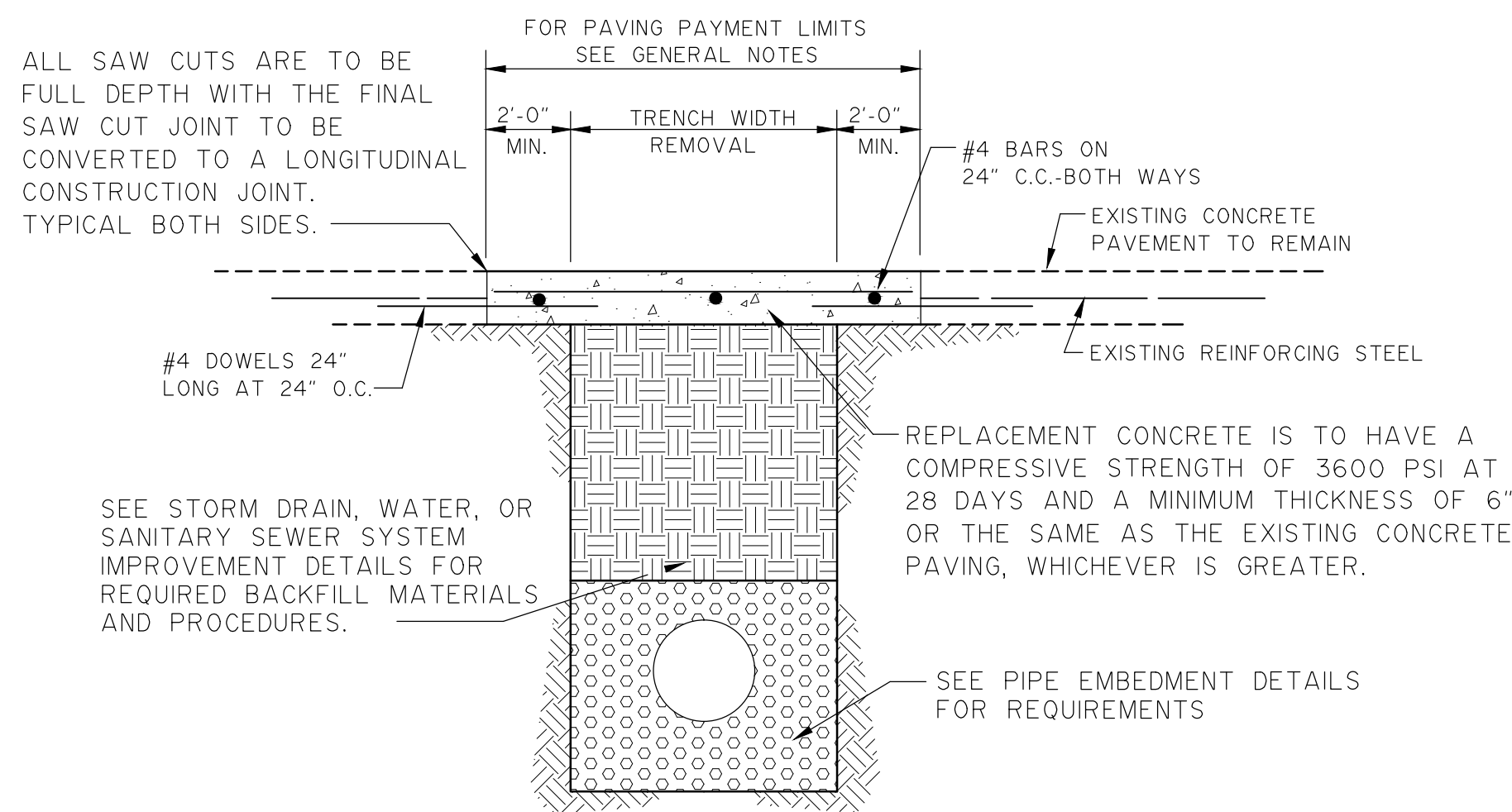
1 TYPICAL DRIVE APPROACH @ CONCRETE STREET
N.T.S.



5 MANHOLE/JUNCTION BOX BLOCK OUT
N.T.S.



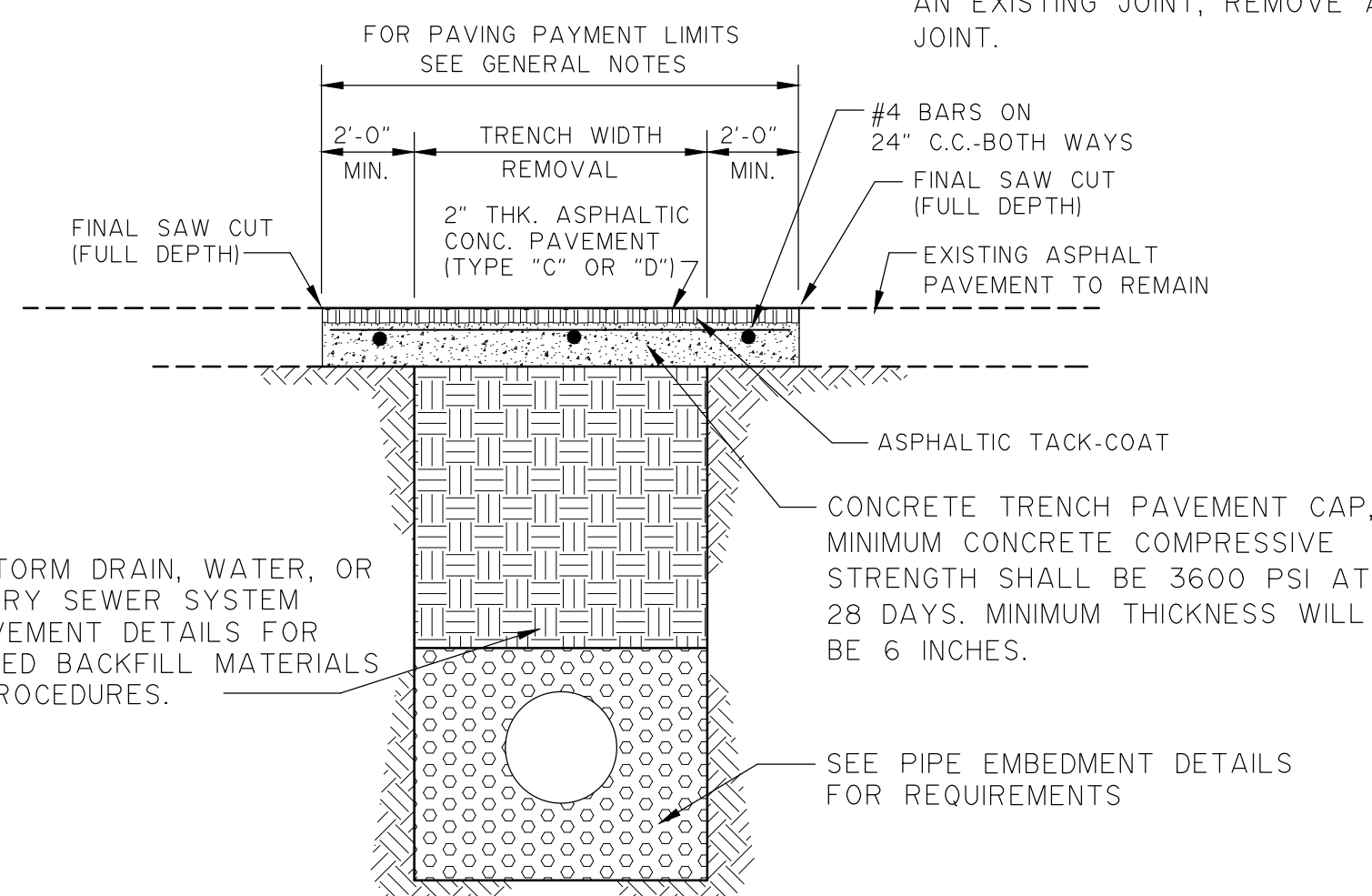
6 RECESSED INLET BLOCK OUT
N.T.S.



REINFORCED CONCRETE PAVEMENT

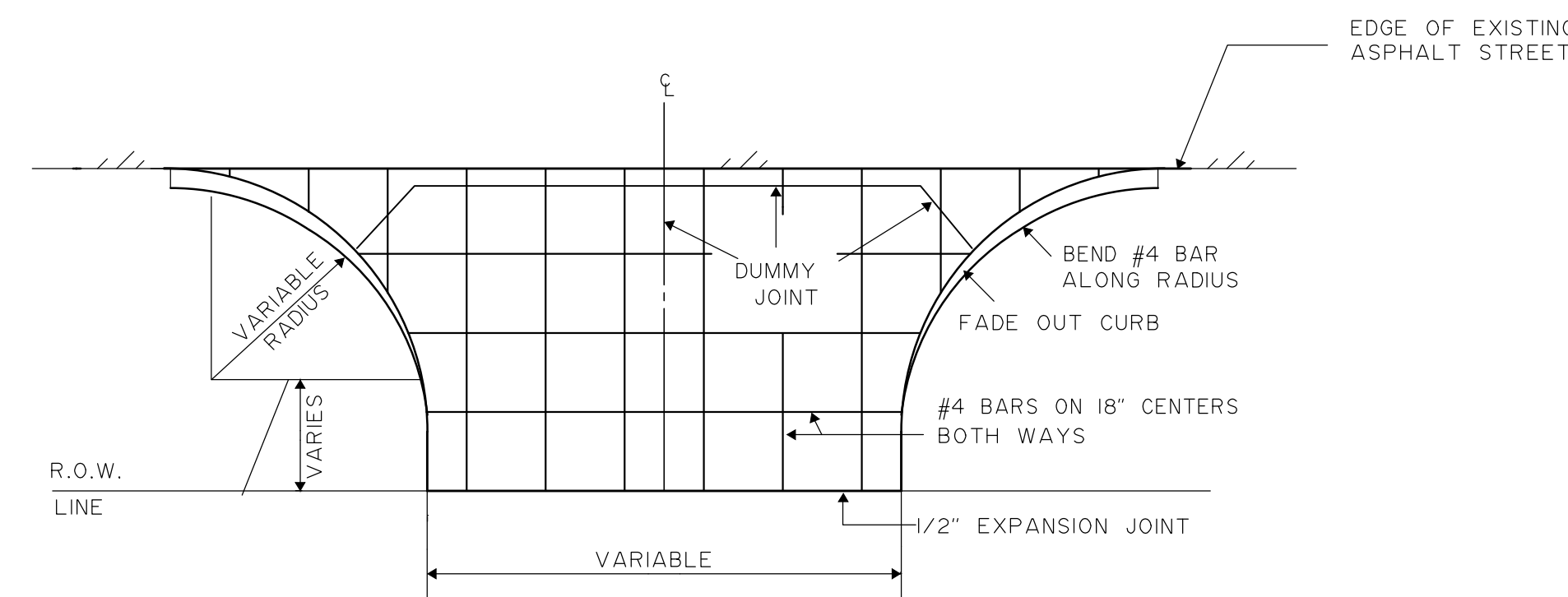
NOTES:

1. PAVEMENT REPLACEMENT WIDTH TO BE A MAXIMUM OF TRENCH WIDTH PLUS 4'-0\"/>



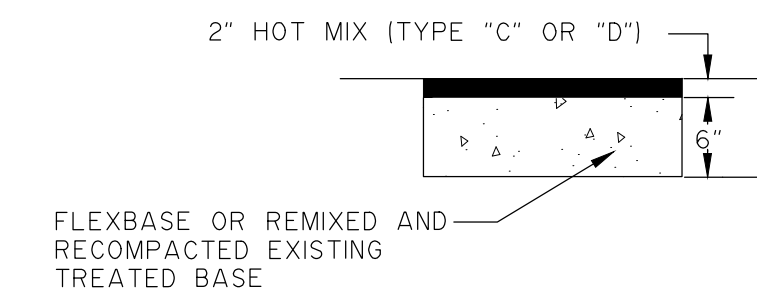
FLEXIBLE BASE AND ASPHALTIC CONCRETE SURFACE

2 PAVEMENT REPAIR FOR UTILITY INSTALLATION
N.T.S.

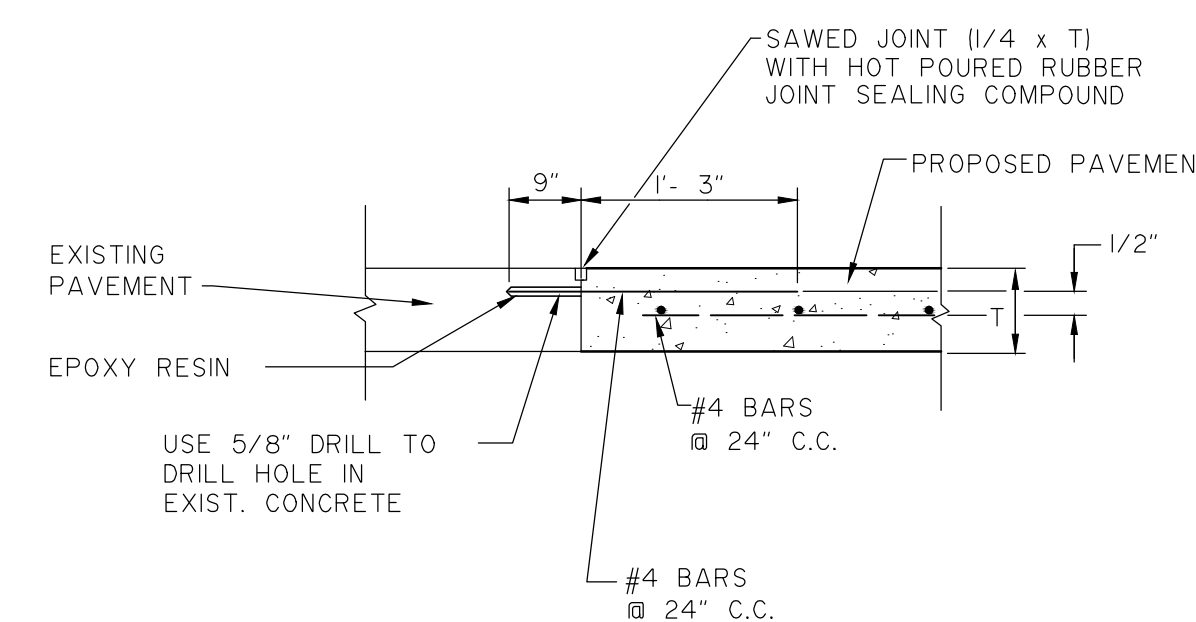


REFER TO NOTES FOR APPROACH @ CONCRETE STREET. (DETAIL 1 ON THIS SHEET)

3 TYPICAL DRIVE APPROACH @ ASPHALT STREET
N.T.S.



4 TEMPORARY HMAC PAVING
N.T.S.



7 DOWEL INTO EXISTING CONCRETE PAVEMENT
N.T.S.

NOTE: THIS IS SHT. SD-3 OF THE STANDARD CONSTRUCTION DETAILS, ORDINANCE NO. 2013-51 EFFECTIVE DATE: JANUARY 1, 2014

CITY OF MIDLOTHIAN, TEXAS
DEPARTMENT OF ENGINEERING,
UTILITIES, AND PUBLIC WORKS

STANDARD CONSTRUCTION DETAILS
PAVING

HMAC, BLOCK OUT, DOWEL, PVMT.
REPAIR, & DRIVEWAY DETAILS



NO.	REVISION	DATE	SHEET
			SD-3