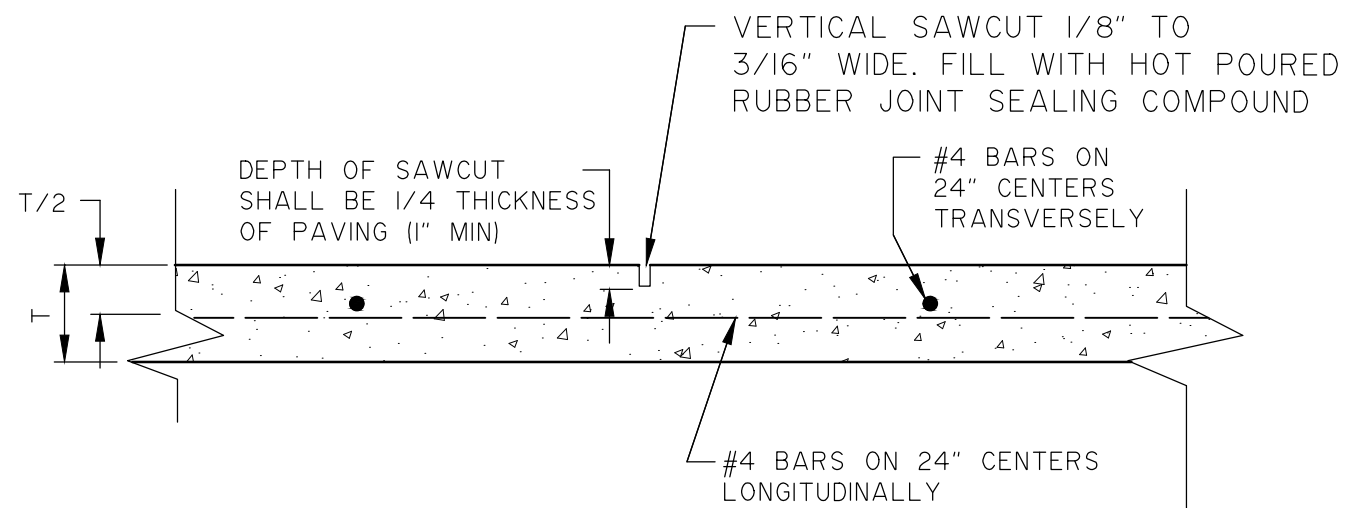
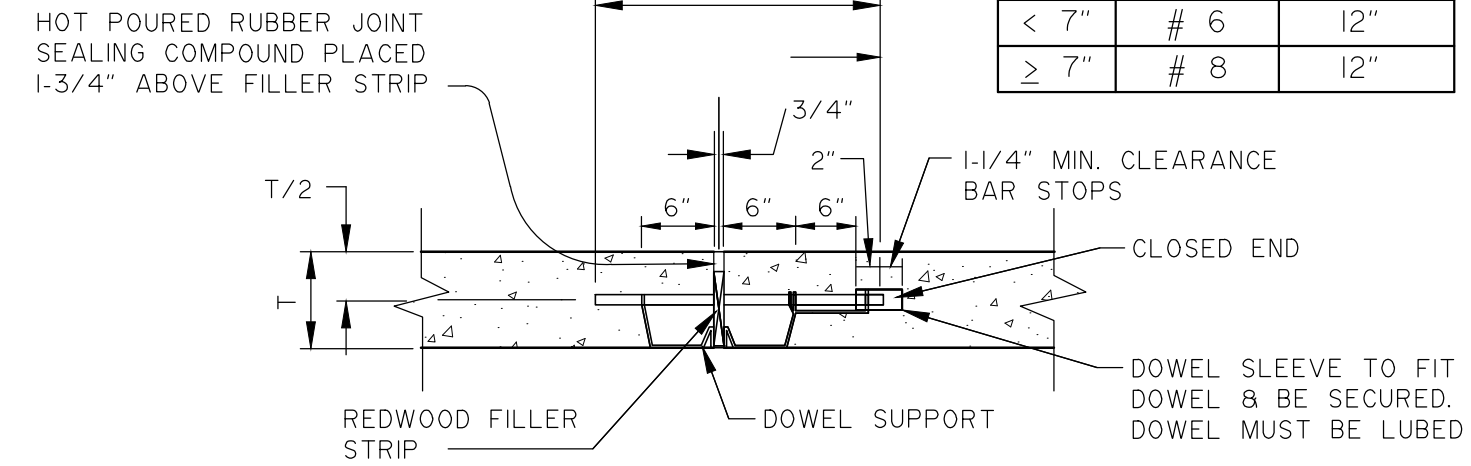


NOTE:
LONGITUDINAL JOINT SHALL BE PLACED AS SHOWN. TRANSVERSE JOINTS SHALL BE PLACED AT 15' INTERVALS (MAXIMUM).



1 SAWED CONTRACTION JOINT
N.T.S.

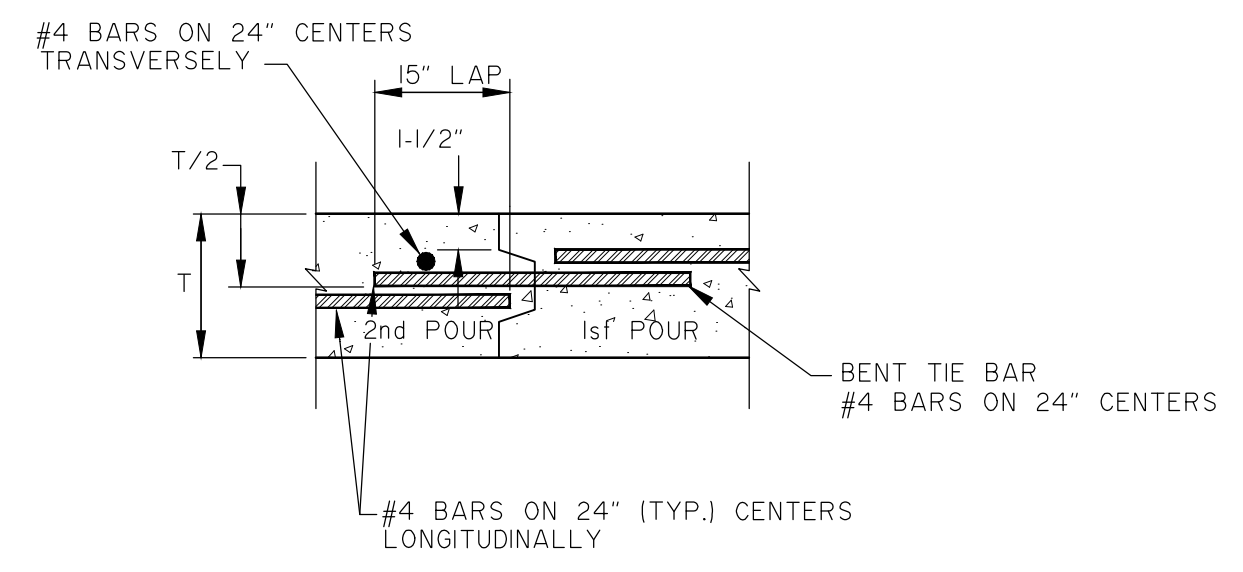
T	DOWEL SIZE	SPACING
< 7"	# 6	12"
≥ 7"	# 8	12"



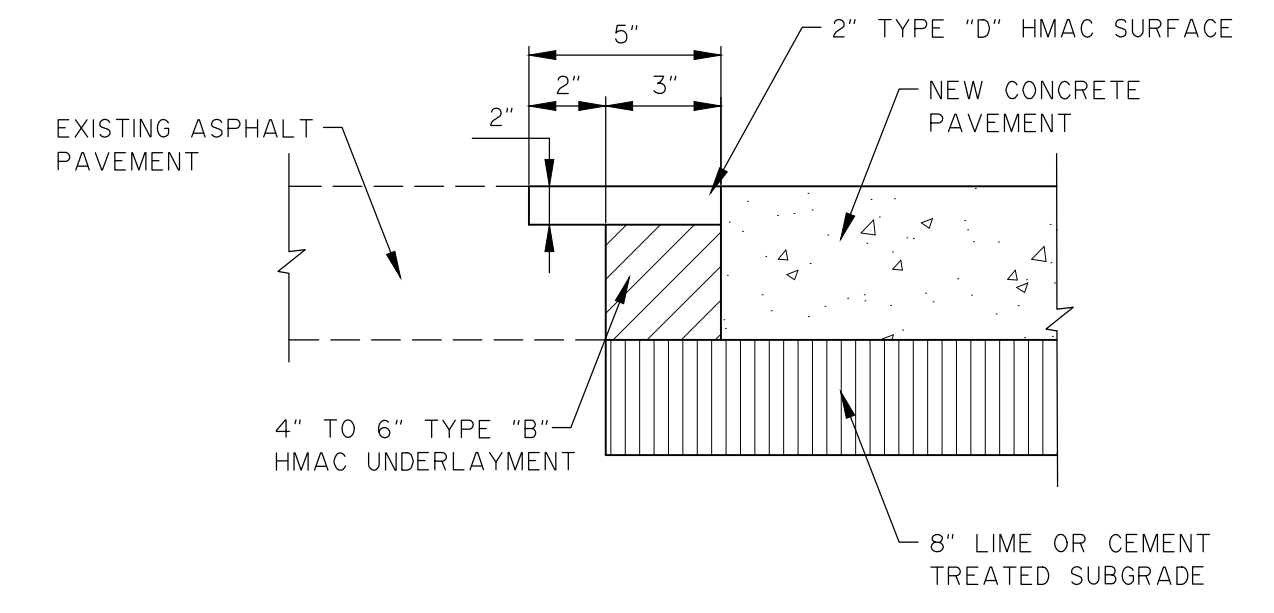
NOTES:
1. PAVEMENT STEEL IS NOT SHOWN FOR CLARITY AND SHALL STOP 3 INCHES FROM JOINT.
2. EXPANSION JOINTS SHALL BE PLACED AT ALL INTERSECTION CURB RETURN POINTS AND AT THE TERMINATION OF EACH DAY'S POUR. MAXIMUM SPACING SHALL BE 600 FEET.

2 TRANSVERSE EXPANSION JOINT
N.T.S.

NOTES:
1. STEEL FROM PREVIOUS PLACEMENT OF CONCRETE MAY BE SUBSTITUTED IN PLACE OF TIE BAR.
2. KEYWAY IS OPTIONAL AND MAY BE DELETED.

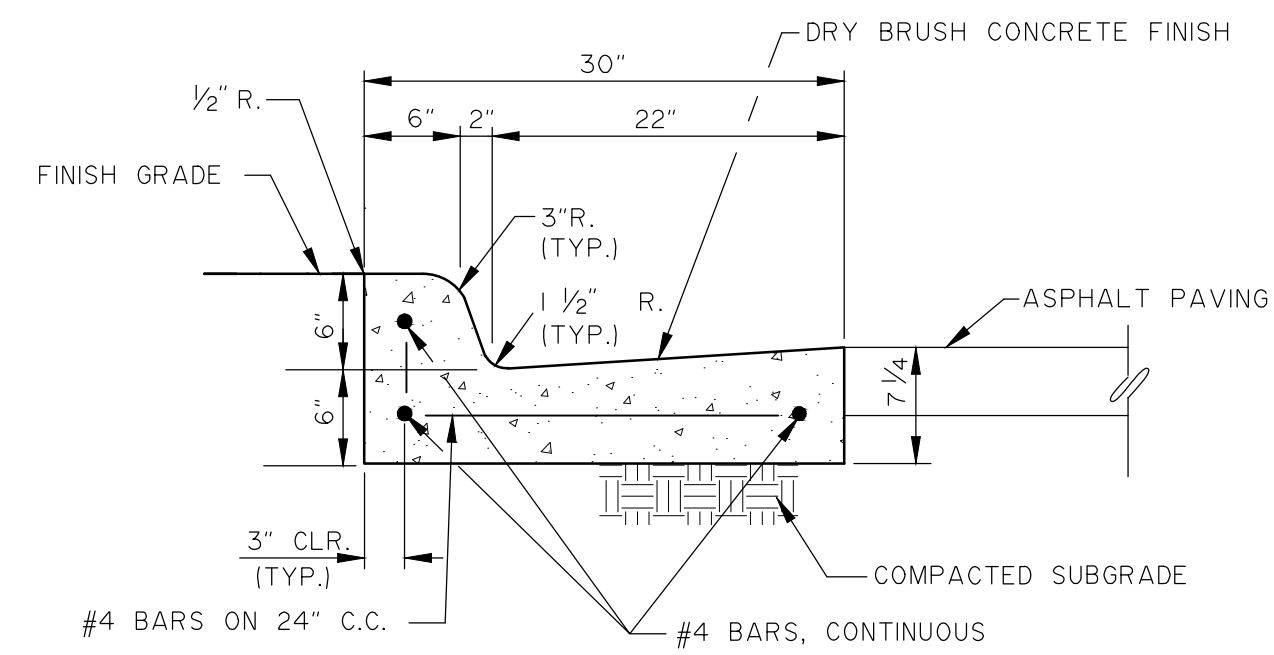


3 CONSTRUCTION JOINT
N.T.S.

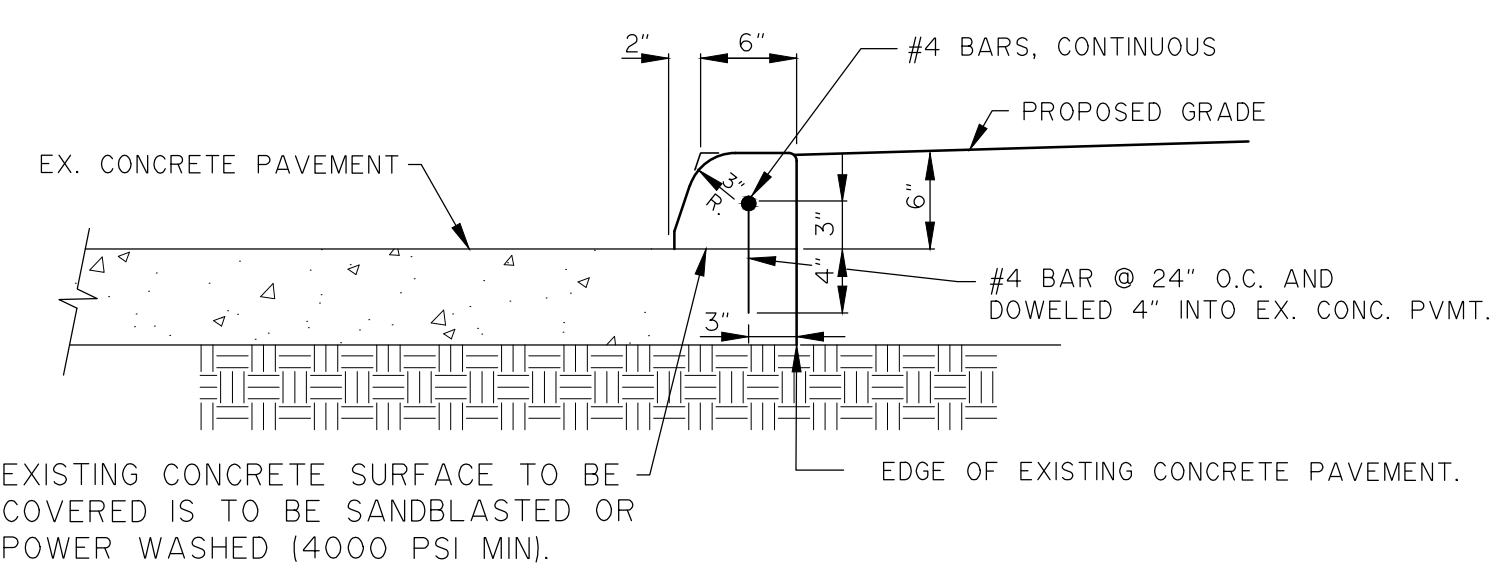


SECTION B-B
N.T.S.

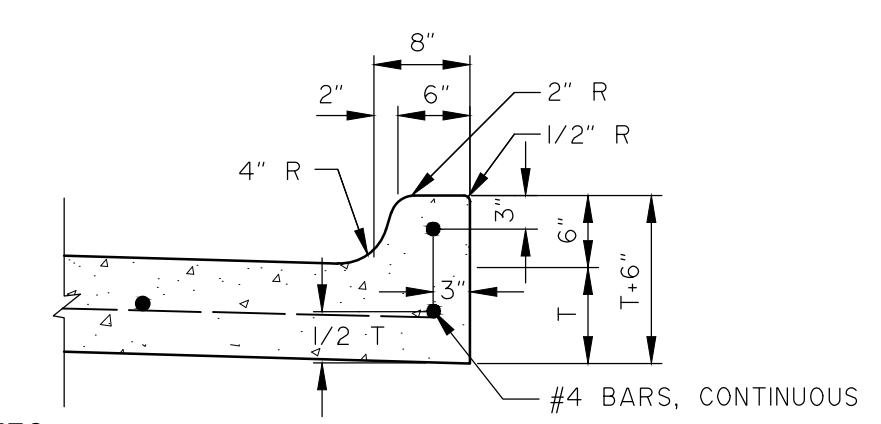
NOTE:
ASPHALT PAVEMENT SHALL BE EQUAL IN DEPTH TO PROPOSED CONCRETE OR 6", WHICHEVER IS GREATER. THE TOP 2" SHALL BE TYPE "D". SUBGRADE SHALL EXTEND TO EXISTING ASPHALT PAVEMENT.



4 30" CONCRETE CURB & GUTTER
N.T.S.

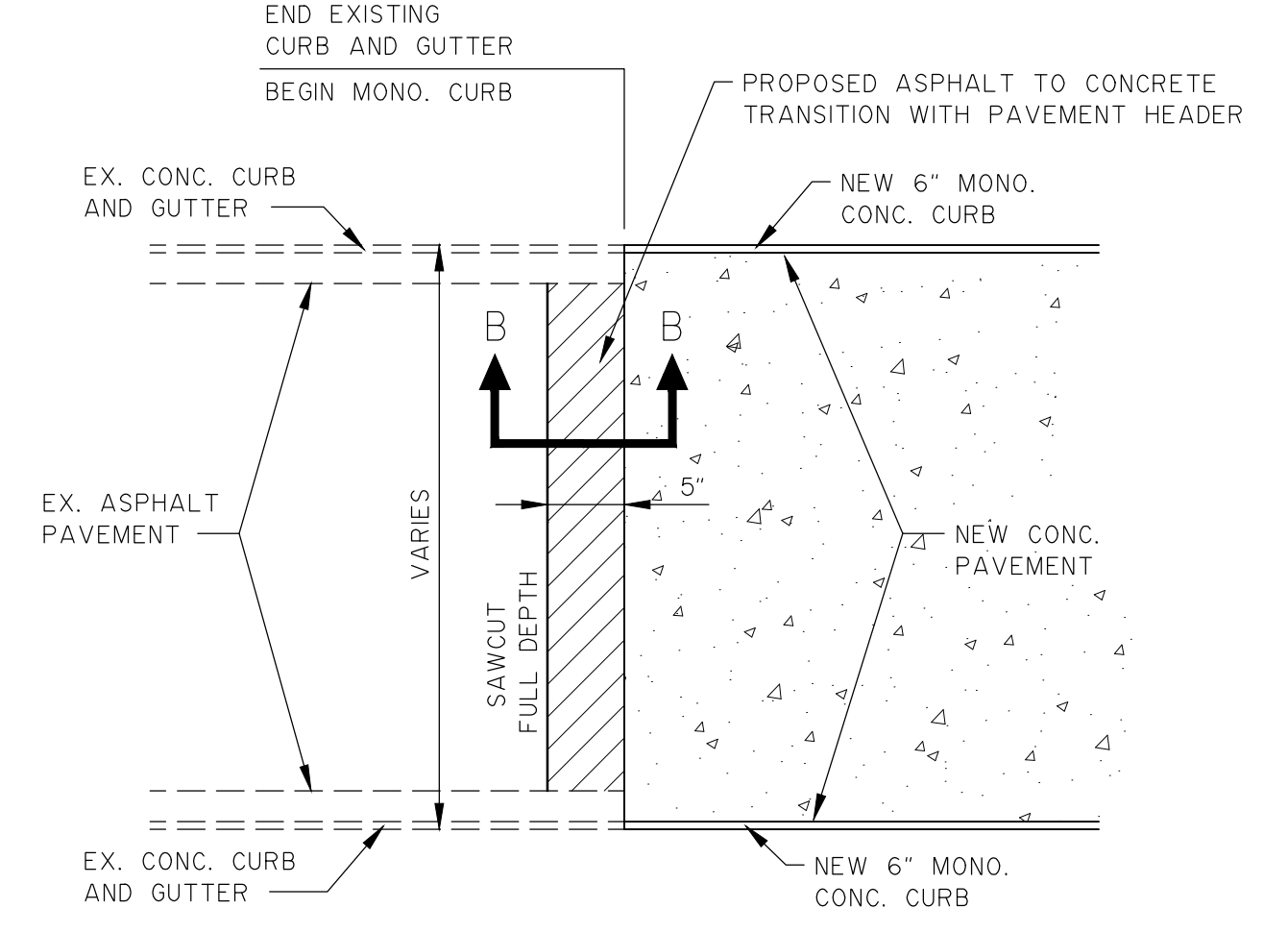


5 6" DOWELED IN CURB
N.T.S.

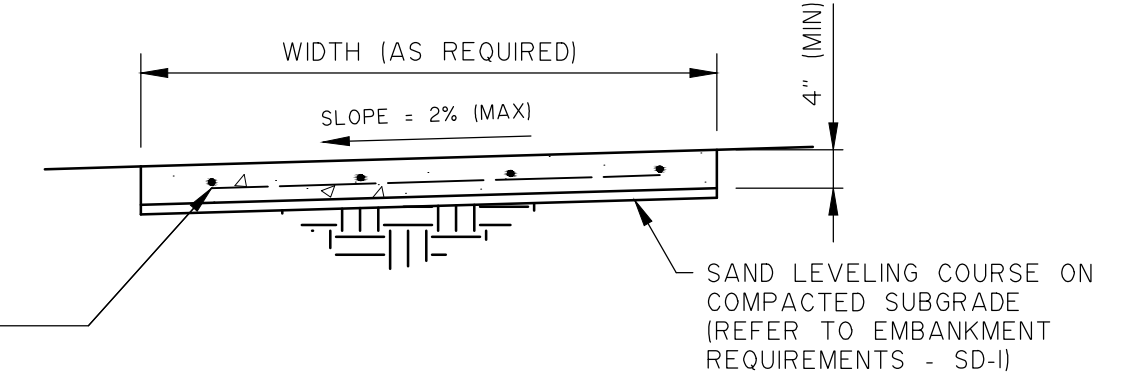


NOTES:
1. AN APPROVED WHITE PIGMENTED CURING COMPOUND SHALL BE APPLIED TO THE SURFACE OF THE CURB AND GUTTER AS SOON AS IT HAS BEEN PLACED AND FINISHED.
2. ALL REINFORCING STEEL SHALL BE #4 BARS.

6 MONOLITHIC CONCRETE CURB
N.T.S.



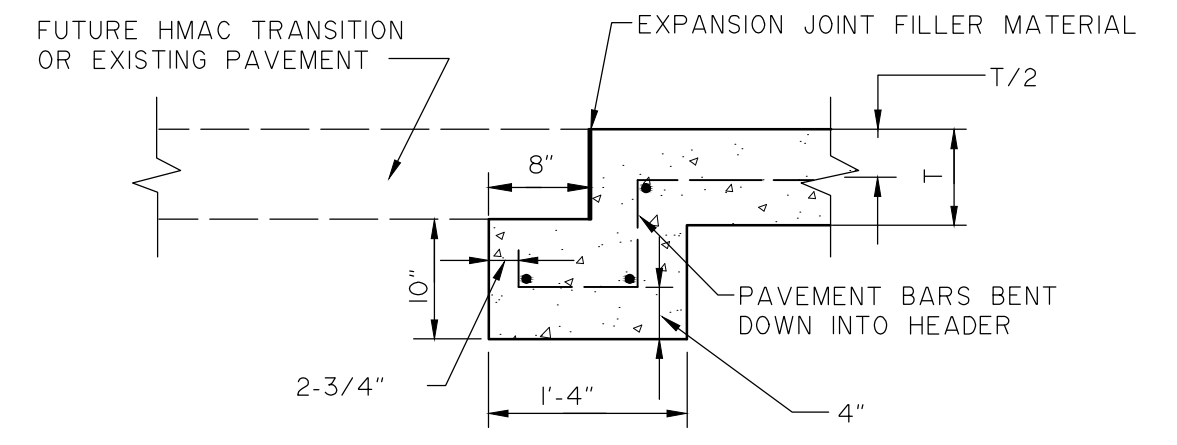
7 ASPHALT TO CONCRETE TRANSITION
N.T.S.



EXPANSION JOINTS SHALL BE FORMED AND PLACED IN ACCORDANCE WITH NCTCOG STANDARDS, INCLUDING 40-FOOT INTERVALS, AT ALL INTERSECTIONS, CURBS, DRIVEWAYS, OTHER SIDEWALKS AND ADJACENT TO EXISTING CONCRETE WORK.

10 CONCRETE SIDEWALK
N.T.S.

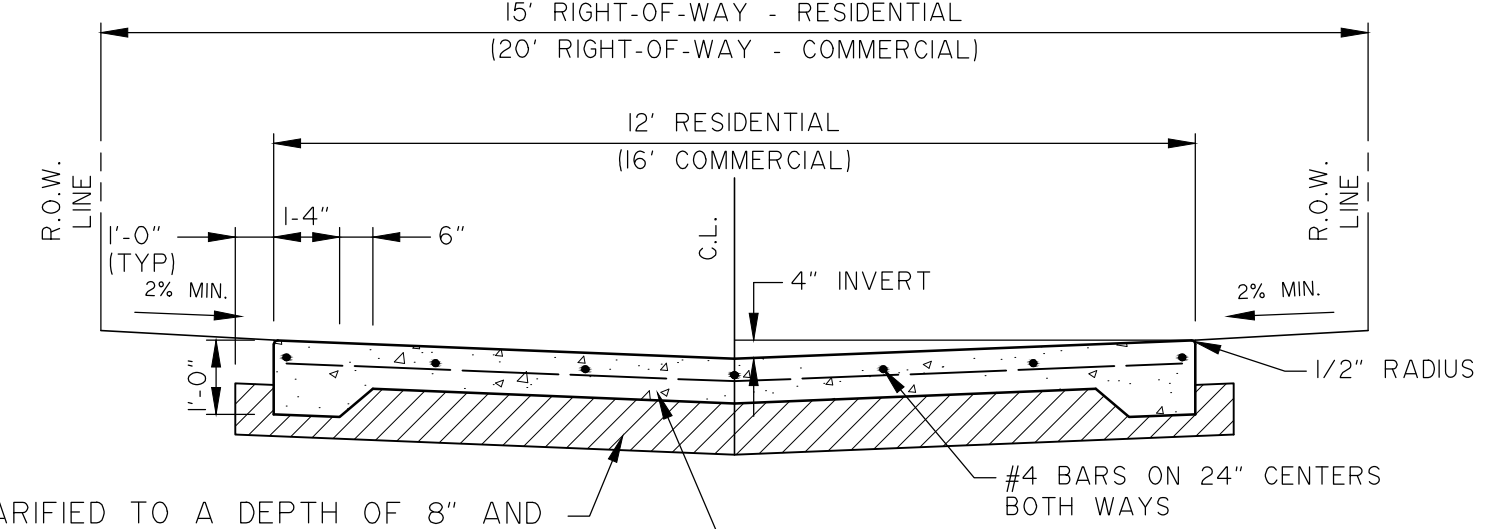
NOTE: THIS IS SHT. SD-2 OF THE STANDARD CONSTRUCTION DETAILS, ORDINANCE NO. 2013-51 EFFECTIVE DATE: JANUARY 1, 2014



NOTES:
1. PAVEMENT AND HEADER TO BE POURED MONOLITHICALLY.
2. THIS IS SUBSIDIARY TO REINFORCED CONCRETE PAVEMENT.

8 PAVEMENT HEADER
N.T.S.

SUBGRADE SHALL BE SCARIFIED TO A DEPTH OF 8" AND RECOMPACTED IN COMPLIANCE WITH TEX 113-E. SUBGRADE SHALL BE STABILIZED w/48 LBS./S.Y. (8% BY WEIGHT) OF HYDRATED LIME. LIMIT OF SUBGRADE SHALL EXTEND ONE FOOT BEYOND PAVING. RATE OF LIME MAY BE REDUCED OR ELIMINATED ONLY WITH APPROVAL OF CITY ENGINEER BASED ON APPROPRIATE TESTING RESULTS.



9 STANDARD ALLEY SECTION
N.T.S.



CITY OF MIDLOTHIAN, TEXAS
DEPARTMENT OF ENGINEERING,
UTILITIES, AND PUBLIC WORKS

STANDARD CONSTRUCTION DETAILS
PAVING

PAVEMENT JOINTS, ALLEY,
CURB & SIDEWALK DETAILS

NO:	REVISION:	DATE:	SHEET:
			SD-2